

# Airborne & Military Mobile Data Recording & Analysis System

CMC-e-1000 Data Recording and analysis unit is designed for airborne or mobile military environments.

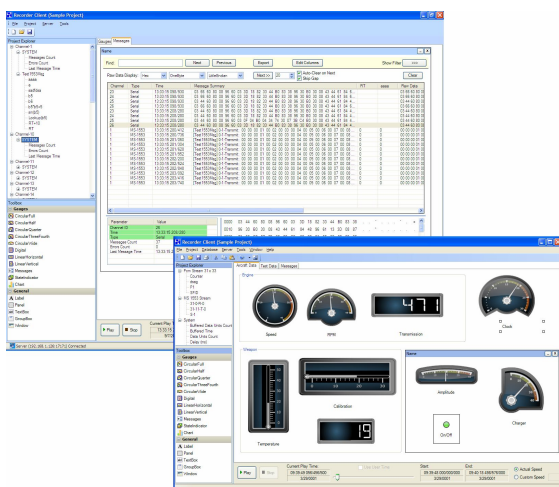
The system which is easily configured to various buses, has a Client Server configuration for multiple concurrent clients, working with single data recorder. The unit stores the recorded messages with time stamps in database per IRIG-B Chapter 9, 10.

## A typical configuration

- ◆ Up to 4 MIL-STD-1553 (A+B),
- ◆ Up to 16 x RS-422/232/485 (up to 1 Mbit per channel.),
- ◆ Up to 20 discrete signals,
- ◆ Up to 2 Real time Ethernet (TCP/IP or AFDX).

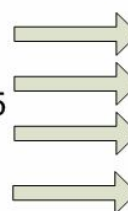
## Hardware

- ◆ 18-36VDC per MIL-704E.
- ◆ 32-256GB Removable Flash Disk.
- ◆ Internal 100BaseT SWITCH.
- ◆ Vibration, Shocks per MIL-STD-810F (Planes and Helicopters).
  - Extended Temperature Range.
  - Option— Add external IRIG B time source.

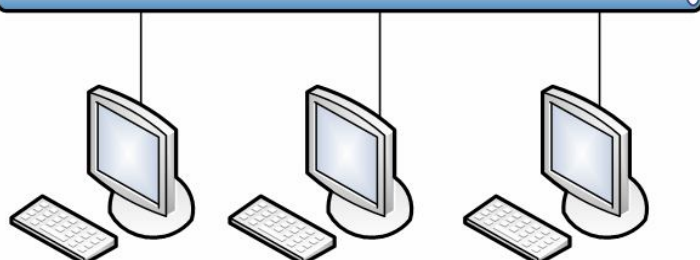


## Input Signals      Recording Server

Mil-STD-1553  
ARINC-429  
RS 422/232/485  
Ethernet  
Discrete



LAN



## Administration & Analysis workstations

### Software (available as a stand alone package)

- ◆ Up to 1  $\mu$ Sec timestamp resolution.
- ◆ Real time and offline data analysis capabilities;
  - Real time data view local/remote.
  - Offline file/session view for historical recorded data (remote/local).
- ◆ Advanced soft panel capabilities
- ◆ Multiple display TABS;
- ◆ User can design his own view for each TAB.
  - Message view option (WireShark like view)
  - Integrated Graphical display gauges and indicators.
- ◆ Standalone / Client Server configuration allowing multiple concurrent clients working with single data recorder.
- ◆ Serial Communication Support RS422, RS232, RS485 Interfaces;
  - Up to 1Mbit baud rate per channel.

ETI Services Inc.      CAGE CODE: 1PZ92

1400 N Jefferson St., Anaheim CA. 92807 Tel: +1-714-524-2986,

Mobile: +1-714-932-9669 Fax: +1-714-524-8771 E-mail: [sales@military-computers.com](mailto:sales@military-computers.com)

# Airborne & Military Mobile Data Recording & Analysis System

## *Reliable and rugged*

The CMC-e-1000 withstands severe environmental conditions. Compact and easy to install, the unit is self-cooled. It operates autonomously from a 18-36VDC power source. The CMC-e-1000 uses either solid-state or hard-drive recording media, with the storage capacity for many hours of continuous operation

## *CMC-e-1000 Construction*

The unit is designed and constructed in accordance with the general requirements of MIL-STD-454.

## *Thermal Design*

The cooling of the components on the CMC-e CPU and Power Supply is accomplished by conduction through the aluminum enclosure of the unit. The cooling of the plug in boards is accomplished by circulated air.

## *External Connectors*

External connectors are used for interfacing with the subassemblies or equipment and are in accordance with requirement of MIL-STD-454. Connector mating bodies are keyed, and keyed locations are varied to prevent improper installation.

BES Customizes the Panel of Connectors per Customer's requirements



## *Identification and Marking*

The marking and labels of the equipment meet the requirements of MIL-M-13231.

## **Environmental**

### *Temperature range:*

- ◆ Operating: 0°C to +55°C  
Option: -20°C to +65°C (with Flash disk).
- ◆ Non-operating: -40°C to +75°C;

### *Relative humidity: Vibrations*

Up to 95% relative humidity, non-condensing, MIL-STD-810F

### *Salt Fog:*

5% solution per MIL-STD-810F method 509.3

### *Vibration:*

MIL-STD-810F Method 514.5 Procedure I

### *Shock:*

MIL-STD-810F for flight equipment 40g, 11ms saw tooth

### *Altitude:*

With standard hard disks up to 15,000ft (or the equivalent atmospheric pressure), operating and non-operating. With Flash disks up to 40,000ft (or the equivalent atmospheric pressure), operating and non-operating

### *Fungus, Sand and Dust*

MIL-STD-810F

## **EMI/RFI**

Per MIL-STD-461E

- ◆ CE102, conducted emissions, power leads, 10 kHz to 10 MHz.
- ◆ RE102, radiated emissions, electric field, 100 kHz to 1.0 GHz.
- ◆ RS103, radiated susceptibility, electric field, 2 MHz to 2.0 GHz.
- ◆ CS114, conducted susceptibility, DC cable injection, 10 kHz to 400MHz.

ETI Services Inc. CAGE CODE: 1PZ92

1400 N Jefferson St., Anaheim CA. 92807 Tel: +1-714-524-2986,

Mobile: +1-714-932-9669 Fax: +1-714-524-8771 E-mail: [sales@military-computers.com](mailto:sales@military-computers.com)